

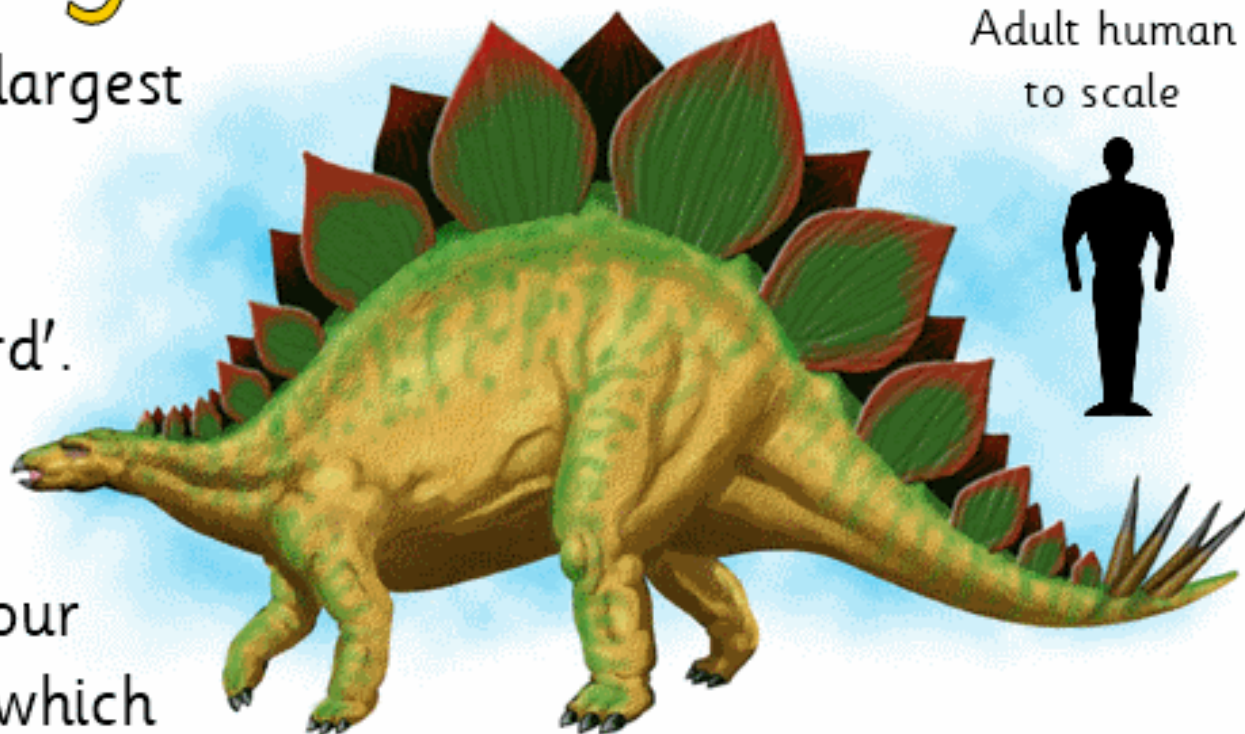
Stegosaurus

The Stegasaurus was the largest of a group of dinosaurs called Stegasauruses. Its name means 'covered lizard'.

Along its back ran large, bony, triangular plates.

At the end of its tail sat four dangerous looking spikes which

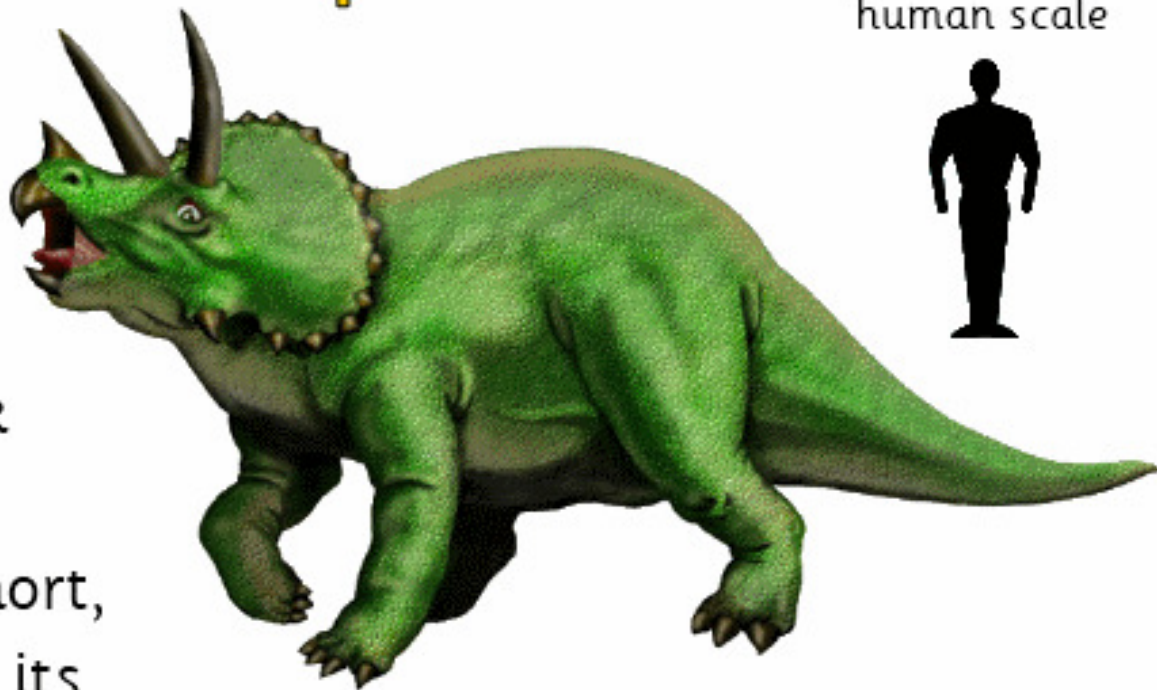
it probably used to defend itself against predators. The brain of the stegasaurus was about the size of a walnut so this dinosaur was not very intelligent. This armour plated dinosaur was a herbivore and only ate plants with its toothless beak.



Triceratops

This dinosaur's name means 'three horned face'. It was a large herbivore and ate only plants. It had no teeth and used its hard, parrot-like beak to eat plants and bushes.

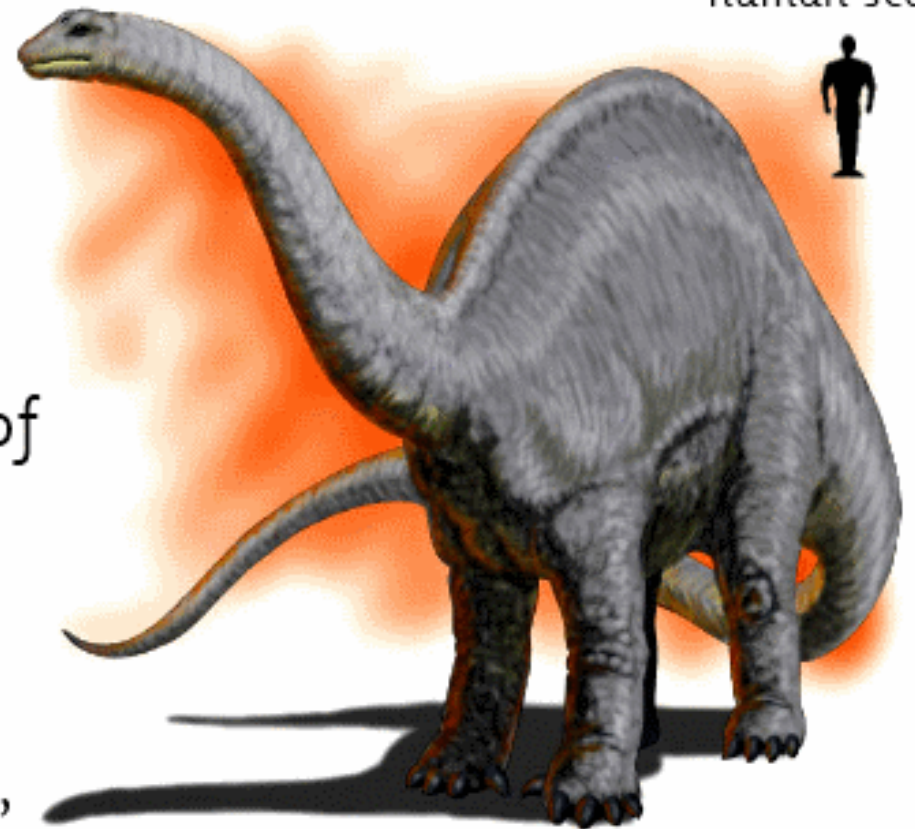
Triceratops walked on four short, strong legs. It probably used its fearsome looking horns to defend itself against predators such as the Tyarannosaurus Rex. Triceratops probably lived in herds to give it greater protection against its predators.



Adult to
human scale

Apatosaurus

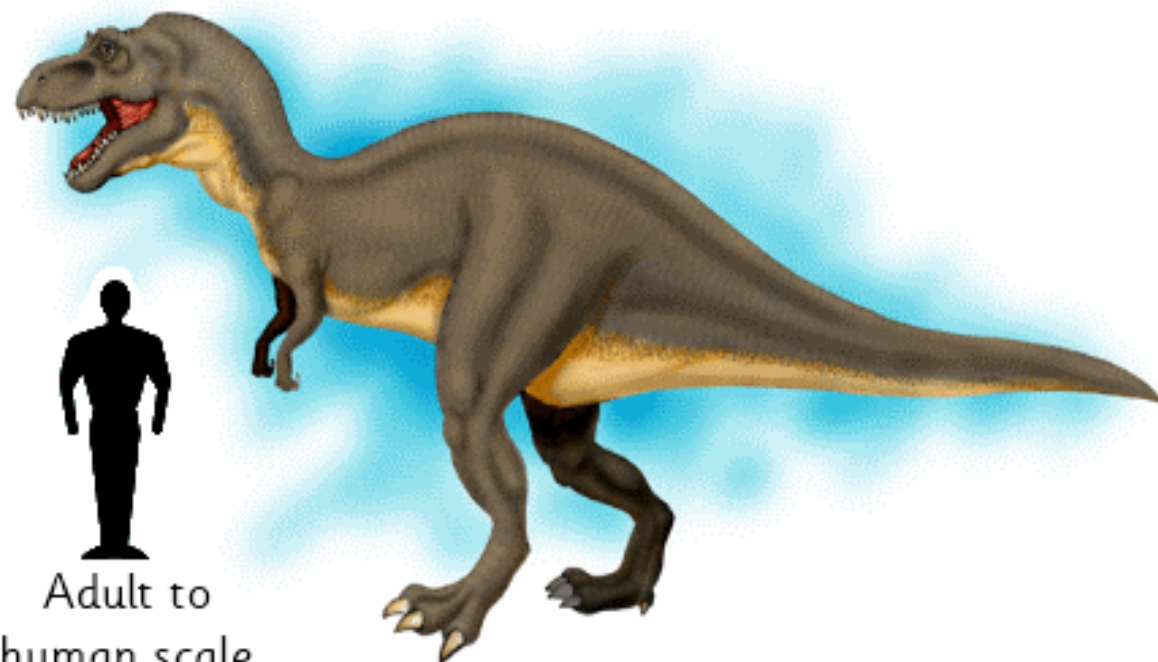
The Apatosaurus is also known as Brontosaurus. This enormous plant-eater was one of the largest land animals that ever existed. It had a tiny head compared with the size of its body and a very tiny brain. Its long neck allowed it to eat from the tops of trees but although it had peg-like teeth at the front of its jaws, it probably swallowed its food whole. The Apatosaurus walked on four heavy, elephant-like legs. Its long whip-like tail was probably used as a defence from large predators.



Adult to
human scale

Tyrannosaurus Rex

The name of this dinosaur means 'tyrant lizard king'. It was one of the largest predators that ever walked the earth. It was a fierce carnivore and ate only meat with its huge jaws and sharp pointed teeth.



The Tyrannosaurus Rex walked on two powerful legs. Its fore limbs were much smaller - about the size of a man's arms with two clawed fingers on each end. The T. Rex probably lived in forests where it could find plenty of plant-eating dinosaurs to hunt and eat.